



# Primary 1 (2025) Orientation

## Sharing with Parents

**By Mrs Shirley Ong**

**Year Head (Lower Primary)**

**16 October 2024**





# Transition to Primary One

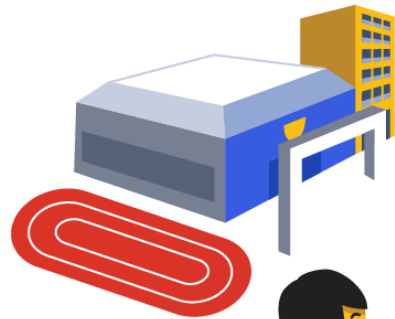


reading and sharing his thoughts with ease and confidence.



# TRANSITION TO PRIMARY 1

New friends  
and teachers



New routines



New learning environment

# WHAT IS IT LIKE IN SCHOOL?



## Subjects taken at P1

1. English Language (EL)
2. Mother Tongue Language (MT)
3. Mathematics (MA)
4. Social Studies (SS)
5. Art
6. Music (MU)
7. Physical Education & Health Ed (PHE)
8. Programme for Active Learning (PAL)
9. Character and Citizenship Education (CCE)





## Approach to Teaching and Learning

## BTPS Philosophy

Every child has intrinsic worth. They can learn and achieve when given the right environment and support.

Level Motto “Start it Right!”





# P1 Key Programmes

## ❖ P1 Orientation Week

- P4 Buddy during recess
- BTPS Core skills & school routines

## ❖ Programme for Active Learning (PAL)

- Social skills and teamwork

## ❖ P1 Learning Journey

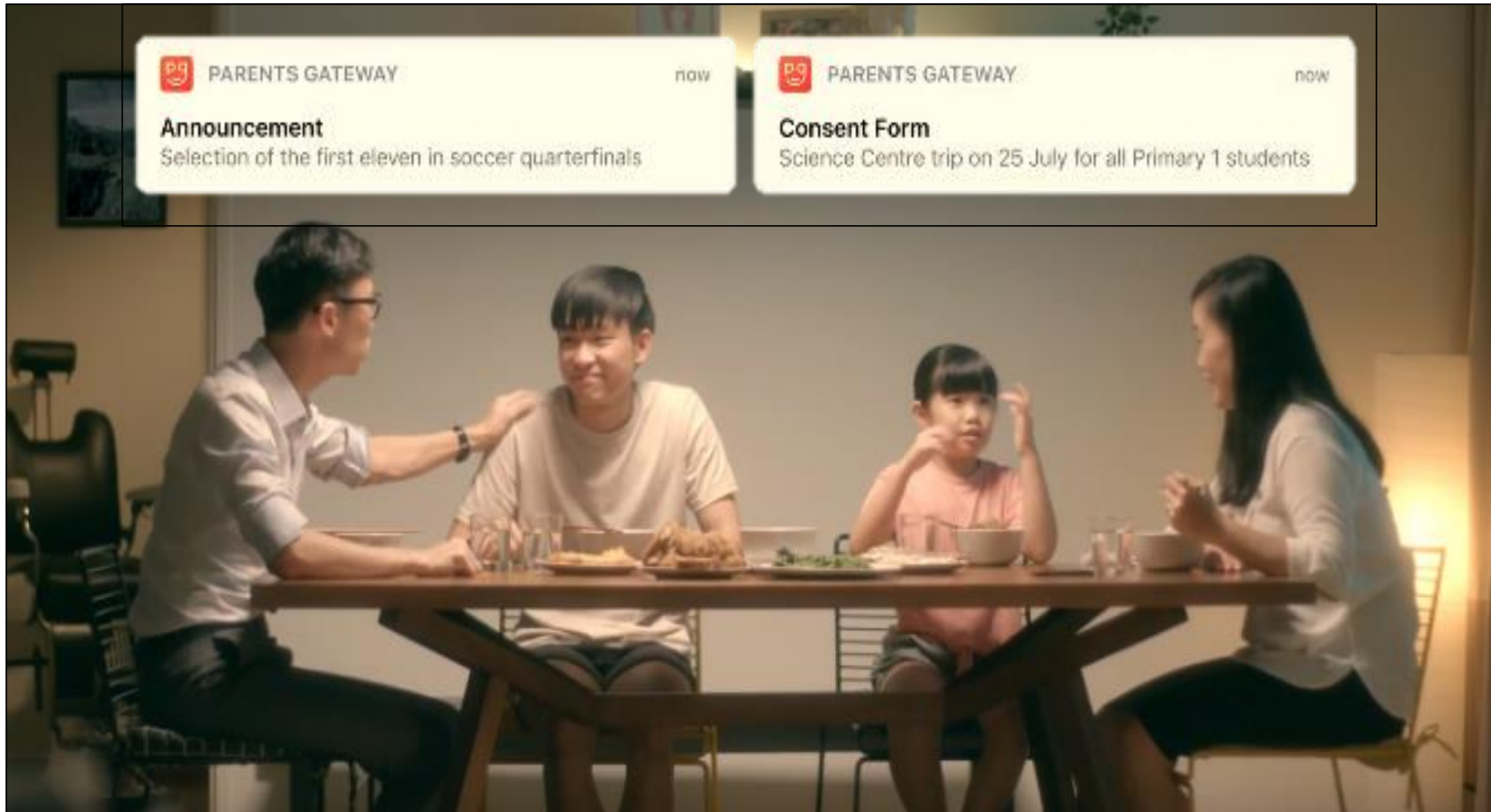
- Learning beyond the classroom

## ❖ P1 Games Day

- Teamwork and resilience









# Zoom with Form Teachers

- **22 November 2024 (Friday) morning**
- **Meet both Form Teachers via Zoom**
- **Zoom code will be shared via the registered email and Parents Gateway**





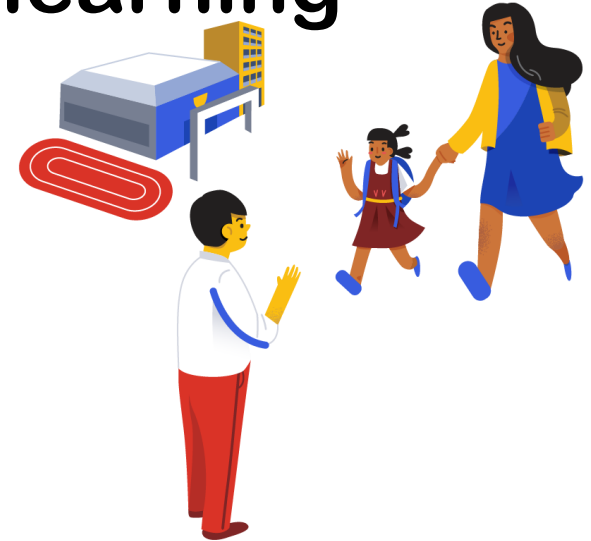
# **First Day of School on 2 Jan 2025**

- Up to two parents will be allowed to come into the school with your child from 0730-1000.**
- Different programme for you and your child**
- Breakfast with your child in the canteen**
- Details will be sent via PG (on 27 Dec 2024)**



# HOW CAN I PREPARE MY CHILD FOR P1 ?

- 1) Relating to others
- 2) Developing good habits
- 3) Nurturing positive learning attitudes
- 4) Creating a conducive learning environment at home





## 1) RELATING TO OTHERS

# Build your child's interpersonal skills

- Model the use of polite phrases
  - “Hello! My name is... what is your name?”
  - “May I go to the toilet please ?”
- Provide opportunities for your child to share and take turns during playtime with other children.
- Teach him/her coping strategies to enable him/her to manage emotions.





## 2) DEVELOPING GOOD HABITS

**Guide your child to do the following independently . Set routines to help them manage.**

- Use of toilet
- Wash hands correctly
- Dress themselves (button shirt/blouse)
- Buy food at the canteen
- Pack their bags
- Take care of their belongings (labelled)

**Eg Wallet, water bottles, lunch boxes**





### 3) NURTURING POSITIVE LEARNING ATTITUDES

## Developing the right learning attitude

You can encourage your child to:

- Ask questions about their experiences and the world around them.
- Express their thoughts and feelings about and discuss what can be done if they have worries.
- Practice independence and responsibility (\*learn from their mistakes).





## 4) CREATING A CONDUCTIVE LEARNING ENVIRONMENT AT HOME

# Set up a conducive home environment

- Encourage your child to learn English and their Mother Tongue, through picture books, language games or songs.
- Set aside space in your home where your child can read and finish their homework.
- Ensure that your child has both English and Mother Tongue story books to read in school and at home.

Mon & Tue – MT storybook

Wed, Thur, Fri – EL storybook







## A CARING AND CONDUCTIVE LEARNING ENVIRONMENT IN SCHOOL



# Discipline and Care

- When your child is unwell or hurt himself/herself, the school staff will inform the parent to bring the child home.
- If there is any behavioural issue, form teachers will work with the parents to educate the child.
- When your child makes a mistake, use it as an opportunity for the child to learn and grow in the areas of responsibility and maturity.



**Safety for All**  
**All for Safety**



## Arrival

- Enter through Gate 1 and keep to your left.
- Your child should be prepared to alight.
- Alight your child/ward at the designated drop-off points.
- Adhere to the 'No overtaking' rule within the compound. Speed limit 15 km/h.
- Follow the route. Exit from Gate 3.
- Turn LEFT only.

Gate 1







# Dismissal Plan

## School bus

Child to remember the school bus number and follow instructions.

## Private Transport & Public Transport

Park your car safely outside school if you are using private transport.

Pick up your child from Gate 2 (Security Post).





## School Website

<https://bukittimahpri.moe.edu.sg/>

- E-mail addresses of all the teachers and Key Personnel

## Parent's Gateway

<https://youtu.be/PCM5o8jAncc>

- Messages from Form/Subject teachers, Year Head and School



Please give us  
your  
feedback.  
Thank you!

