



Primary Three Meet-The-Parents Session & CCA Fair

4 February 2025



An Adaptive Learner, Empathetic Leader and Future-Ready Citizen

Programme

- Welcome and BTPS Video 2025
- Principal's Address
- P3 Year Head Address
- P3 Assessment Matters
- Introduction to Science in Primary School (HOD Science)
- Selecting a CCA (SH/Aesthetics covering HOD/CCA)
- Touring the CCA Fair



Newest Happenings @ BTPS

- New Vice-Principal: Mrs Shirlyn Seah
 - Revised School Vision, Mission and Values

Vision

An Adaptive Learner, Empathetic Leader and Future-Ready Citizen

Mission

To create a vibrant learning environment that values diversity and build community through shared values, collaboration and innovation.

Values (AEI3R)

Adaptability

Empathy

Integrity

Resilience

Respect

Responsibility



Primary 3 @ BTPS

- The beginning of formal assessment
- New subject: Science!
- Chance to try CCAs
- Gifted Education Programme (GEP) – last batch
- BUT it also means
 - ❑ Growing up
 - ❑ Going beyond self
 - ❑ Understanding what it means to be part of a community
 - ❑ Higher expectations for learning and behaviour



What does Primary 3 mean for your child at BTPS?

Formal Assessments
(are not that scary)



How will I be updated on my child's learning?

Through a variety of assessments conducted at regular checkpoints, teachers will provide timely feedback on your child's learning. This is more effective than only receiving grades/marks at the end of the year.



You can also draw different sources of information on your child's progress via:

- Teachers' written feedback provided through classroom practices such as in-class work, homework, projects, class tests.
- Teachers' meeting with parents in May 2025.

How will school ensure that my child will have sufficient practice to be ready for national exams?

The year-end exams and other forms of assessments, will continue to provide sufficient opportunities to assess your child's ability to apply their learning.



We have a long way to go before PSLE. Give the children time to learn, mature and maintain the Joy of Learning. If we lose that, it will be very boring for your child because they have so many more years of school in their lives.

How can I support my child in his/her learning?

Instead of periods of last-minute cramming, assessments conducted at regular checkpoints can provide our children with ongoing opportunities to consolidate their learning as they go.

Draw up a regular study timetable together with your child and guide them to keep to the schedule.

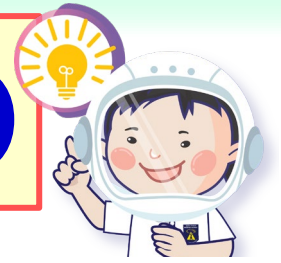
Talk to your child about his/her learning in school. Help your child reflect on his/her learning so that he/she can remember better.

Use teachers' feedback to learn about your child's strengths and areas of improvement, instead of focusing on the marks awarded.

Affirm your child in areas he/she has done well and share ideas on how he/she can improve in the areas identified by teachers.



Gifted Education Programme (GEP)



- The GEP is a programme that caters for the needs of intellectually gifted students. Students are identified for the GEP through a 2-stage exercise in Primary 3. Selected students will be invited to join the programme in Primary 4.
- The school will inform you of the date for the GEP screening exercise. You will have to indicate whether you consent to your child's participation in the exercise.
- Test preparation activities are **not encouraged** as these could inflate the scores, which may then not reflect your child's actual potential.
- Students who are not ready to handle the rigour and demands of the GEP will:
 - Struggle to cope with the enriched curriculum.
 - Experience stress that could impact their self-esteem and cause them to lose confidence.

Key GEP Dates

Stage 1: Screening during curriculum time on 21 Aug 2025 (Thur) EL & Maths

Stage 2: Selection on 14 and 15 October 2025 (Tuesday & Wednesday)
(shortlisted students) EL, Maths and General Ability

Result notification in November.

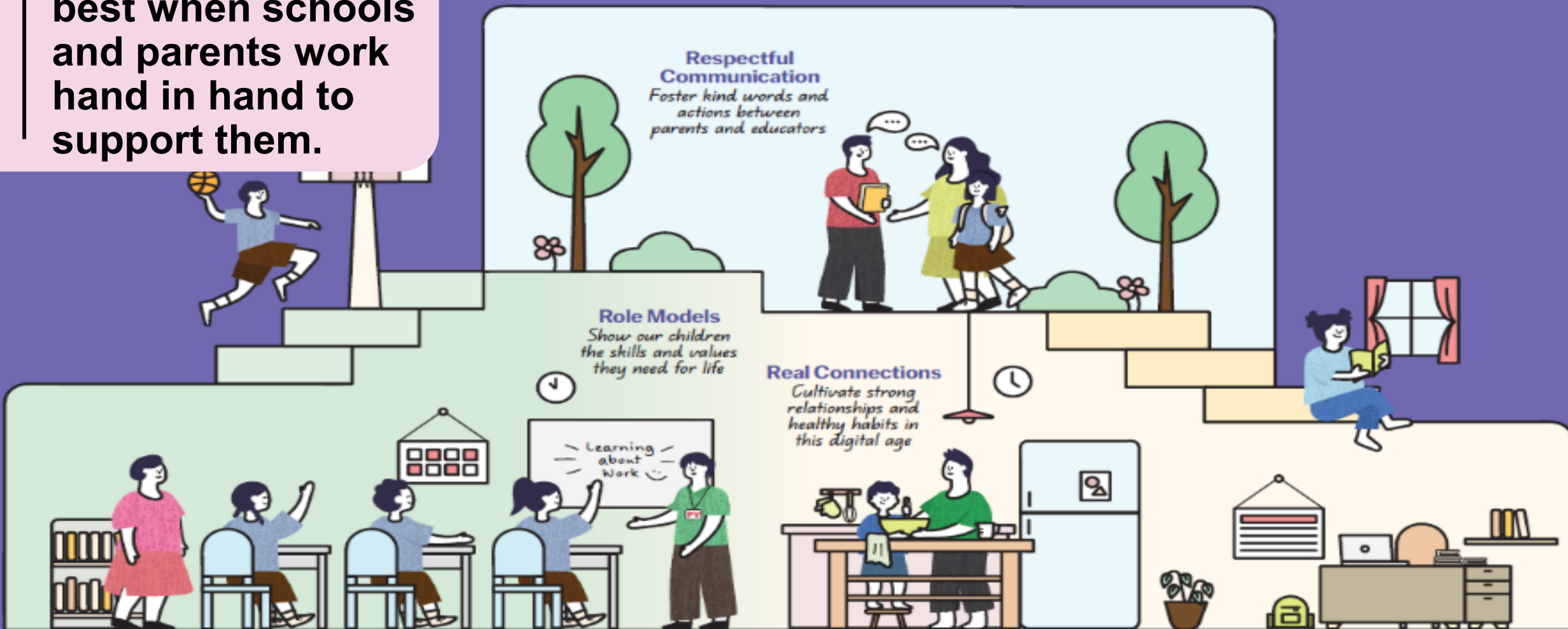
Posting outcomes in late November.



Rest assured that within the school, we have programmes that stretch students in different areas, be it subject areas or leadership.

Raising a Happy, Confident, and Kind Generation Together

Our children do best when schools and parents work hand in hand to support them.



RESPECTFUL COMMUNICATION

Foster kind words and actions between schools and educators



Listen to and understand each other's perspectives and concerns regarding each child.



Communicate kindly using official channels. Teachers are not required to share their personal mobile numbers.



Respect each other's time by communicating during working hours.



CONNECTING WITH THE SCHOOL

- Email addresses of all teachers and Key Personnel, including School Leaders, are on the school website.
- Teachers will not be sharing their personal numbers with parents.
- Best person to approach regarding day-to-day matters would be your child's Form Teacher.
- You can choose to email or call the school general office who will pass the message for the teacher to return call.
- Please give our teachers time to return your call.
- Do keep communication to between 7a.m. to 5p.m. on weekdays.
- We will use Parents Gateway (PG) and email as the main mode of communication, supplemented by phone calls.





Thank You

