

Primary 5 (2024)

Meet-the-Parents Session

25 January 2024

**A PRESENTATION BY
BUKIT TIMAH PRIMARY SCHOOL**



A SCHOOL THAT FUELS THE HEART AND MINDS TO BE FUTURE-READY

Comparison of PSLE Scoring Systems

Click on the link for video:

<https://youtu.be/vr-9ctEWnaA>

REVISED PSLE SCORING SYSTEM

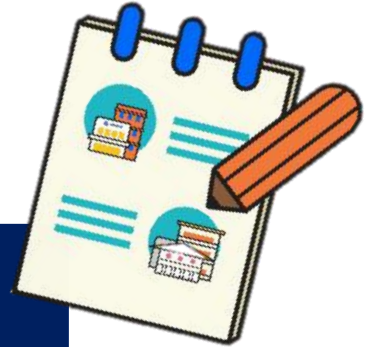


WHAT IS THE INTENT OF THE PSLE?



A useful checkpoint at the end of primary school

A fair way to determine secondary school posting



Over the years, we have been changing the education system to help our students discover and develop their strengths and interests, while moving away from an over-emphasis on academic results. Our PSLE Scoring changes reduce an over-emphasis on academic results by:

1

Reducing fine differentiation of students' examination results at a young age.

2

Recognising a student's level of achievement, regardless of how his/her peers have done.

3

Encouraging families to choose secondary schools holistically based on students' strengths, interests and abilities.

HOW THE PSLE SCORING SYSTEM WORKS



FROM T-SCORE TO SCORING BANDS



Reduces fine differentiation of students' examination results at a young age

Students with similar scores in each subject are grouped into wider scoring bands measured in 8 ALs.

Reflects a student's individual level of achievement

Students' ALs for each subject reflect their level of achievement, rather than how they have performed relative to their peers.

AL	RAW MARK RANGE
1	≥ 90
2	85 – 89
3	80 – 84
4	75 – 79
5	65 – 74
6	45 – 64
7	20 – 44
8	< 20

GRADING OF FOUNDATION SUBJECT GRADES

- Foundation subject grades are graded in scoring bands from **AL A to C**.
- To derive a student's overall PSLE Score for S1 Posting, AL A to AL C for Foundation level subjects are **mapped to AL 6 to AL 8 of Standard level subjects respectively**.
- Similar to the PSLE T-score system, this mapping is based on the learning and assessment load of the subjects, and informs students of how ready they are for the curriculum in secondary school.

FOUNDATION LEVEL AL	FOUNDATION RAW MARK RANGE	EQUIVALENT STANDARD LEVEL AL
A	75 – 100	6
B	30 – 74	7
C	< 30	8



SUBJECT-BASED BANDING (SECONDARY)

[SBB (SEC)] ELIGIBILITY CRITERIA

- SBB (Sec) provides with **greater flexibility** to take various subjects at a more demanding level based on their subject-specific strengths.
- Under the new PSLE Scoring System, the SBB (Sec) eligibility criteria is as follows:

PSLE SUBJECT GRADE	OPTION TO TAKE SUBJECT AT
AL 5 or better in a Standard level subject	G3
AL 6 or better in a Standard level subject <u>OR</u> AL A in a Foundation level subject	G2



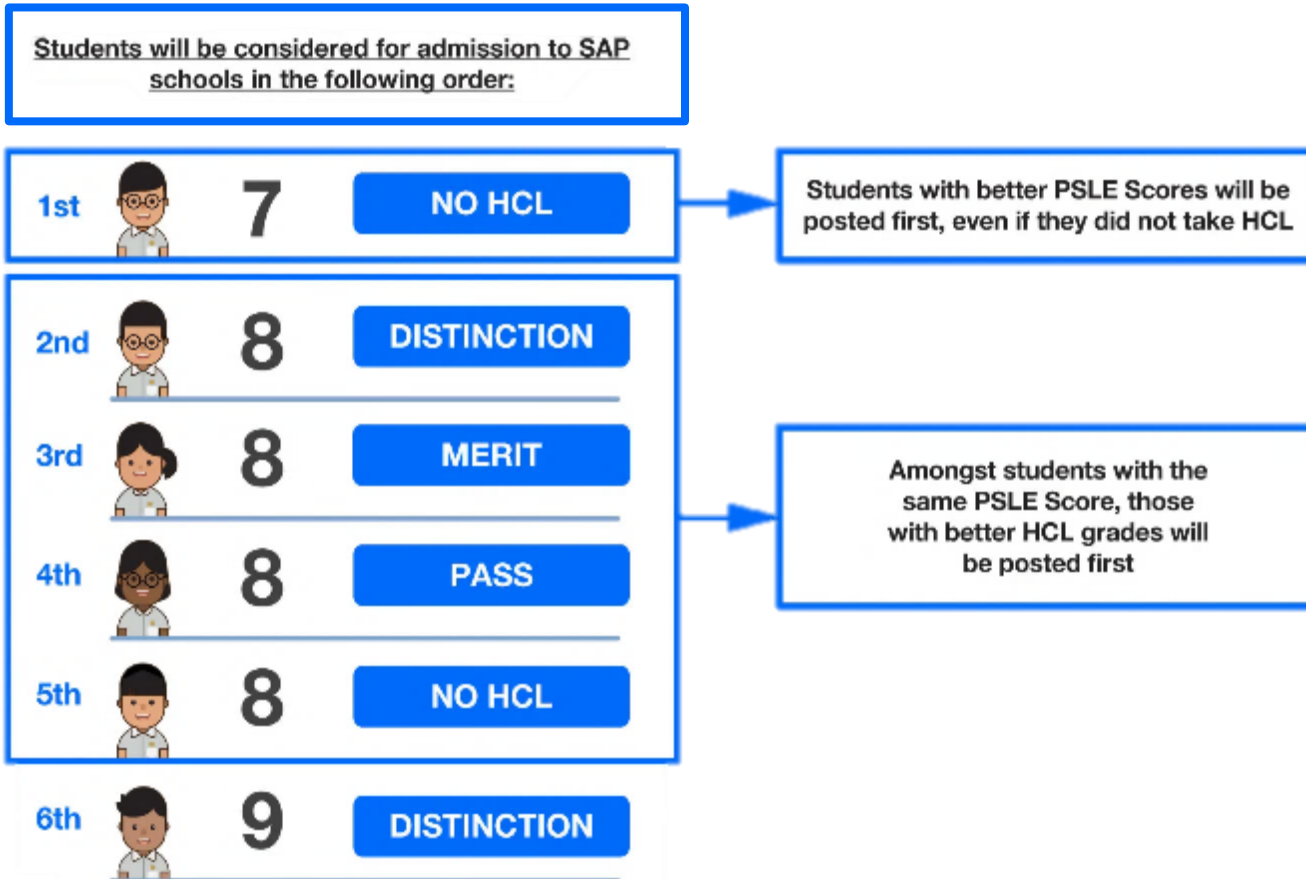
- As students progress in secondary school, they continue to have opportunities at various junctures to take subjects at more demanding levels based on their performance in school.

**USE OF HIGHER CHINESE LANGUAGE (HCL)
FOR ADMISSION INTO
SPECIAL ASSISTANCE PLAN (SAP) SCHOOLS**



HCL POSTING ADVANTAGE FOR ENTRY TO SAP SCHOOLS WILL CONTINUE

Students who obtained a Distinction/Merit/Pass for HCL at the PSLE and an overall PSLE Score of 14 or better will receive a posting advantage when applying to SAP schools.



- Students' HCL results are denoted as 'D' (Distinction), 'M' (Merit) or 'P' (Pass).
- Students who obtain (i) a Distinction / Merit / Pass in HCL and (ii) a PSLE Score of 14 or better are eligible for posting advantage to SAP schools.
- Students are ranked taking into account their performance in HCL.
- This posting advantage applies before the tie-breakers for S1 Posting.

CHOOSING SUITABLE SECONDARY SCHOOLS WITH YOUR CHILD



SCHOOL CHOICE JOURNEY



- The PSLE Score ranges are a **useful reference point** for parents and students to consider secondary schools.
- Use this information, together with other **important factors** such as the secondary schools' distinctive programmes, CCAs, ethos and cultures, to shortlist schools that would best fit the educational needs of the student.
- If your child has specific talents and strengths beyond the PSLE (e.g. areas such as sports, performing arts and leadership), consider the **Direct School Admission-Secondary (DSA-Sec)** as an alternative admission pathway to access secondary schools that have talent development programmes in these areas.

Direct School Admission (DSA)



- DSA-Sec Exercise introduced in 2004 as part of MOE's move towards creating more flexibility and options.
- To encourage schools to recognise talents
- Participating schools will decide on their own admission criteria.

Tips for Parents!

Be open and flexible when discussing your child's preferences, needs and choices.

Have regular conversations with your child to understand more about his/her interests and aspirations.



Manage your own expectations and do not project these expectations onto your child.

Affirm your child and offer support when he/she shares his/her plans with you.

Information on PSLE Scoring and FSBB in Secondary Schools

- PSLE Scoring System (moe.gov.sg)



- Direct School Admission for secondary schools (DSA-Sec) | MOE



Supporting our Primary 5s...



Develop positive learning habits

Practise self-management

Forming a support system



Practise time management



Managing expectations (self and others)

Strategies by the school in 2024

Structuring after school schedule to reduce clashes

2023: CCAs on either Tuesday and Thursday, or Wednesday and Friday, which often clashed with subject enrichment.



Student Leadership to be given a stipulated time to conduct training which grows our students holistically.

Deconflicting and Streamlining

Support our teachers who have been working with overlapping schedules and provide time for their development.



To balance student wellbeing, teacher wellbeing and development, school bus availability and coach/instructor availability.

Level Motto & Expectations

Level Motto

Lead and Inspire

Expectations

- Be responsible
- Show resilience
- Influence others positively



Growing towards Independence

Self-Awareness & Self-Management

- I will apply my strengths to achieve my goals.
- I can overcome challenges.

Social Awareness & Relationship Management

- I will influence others positively.
- I will value diversity as opportunities to learn.
- I will have the support from others to overcome challenges.



Growing towards Independence

Responsible Decision-Making

- I will always uphold integrity.
- I will be responsible for my decisions and actions.
- I will take care of the environment.
- I will be an upstander.



Providing a Holistic Education

- P5 Internationalisation Programme
- P5 NE Show
- P5 Camp
- P5 Learning Journey to Indian Heritage Centre



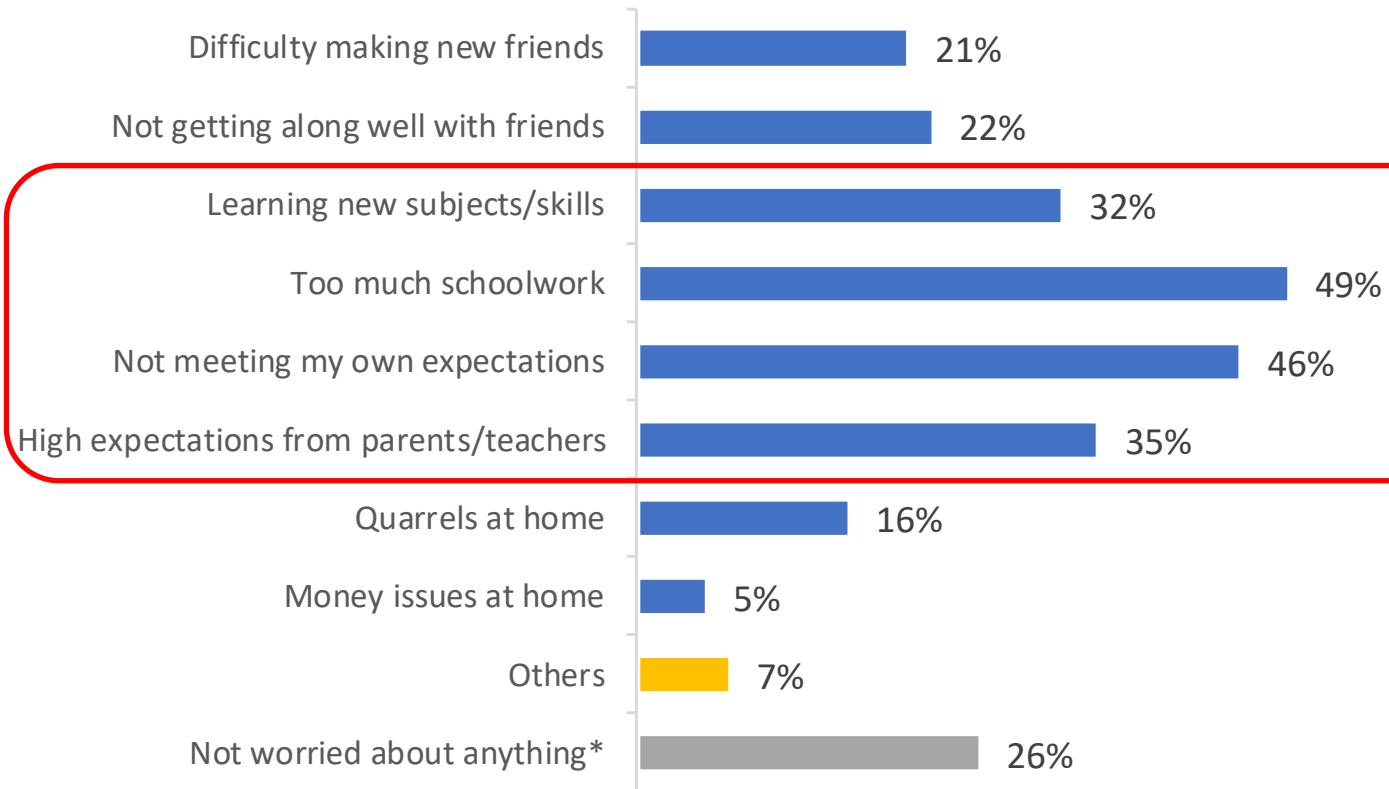
Term 1 Check-in Survey (2024)



Question 7 Diagram 1

Worries about the new year

[students can choose more than 1 option]



* If student had selected at least one worry and still chose "I am not worried about anything", the latter response will not be considered.

Academic Support

Guidelines on Daily Homework

Levels	Weekly Homework Time (estimated)
P1 and P2	2 - 4 hours
P3 and P4	5 – 7 hours
P5 and P6	8 – 10 hours

Note:

- Lower Primary students complete most of their work in class.
- Upper Primary students need more time to complete practice papers.

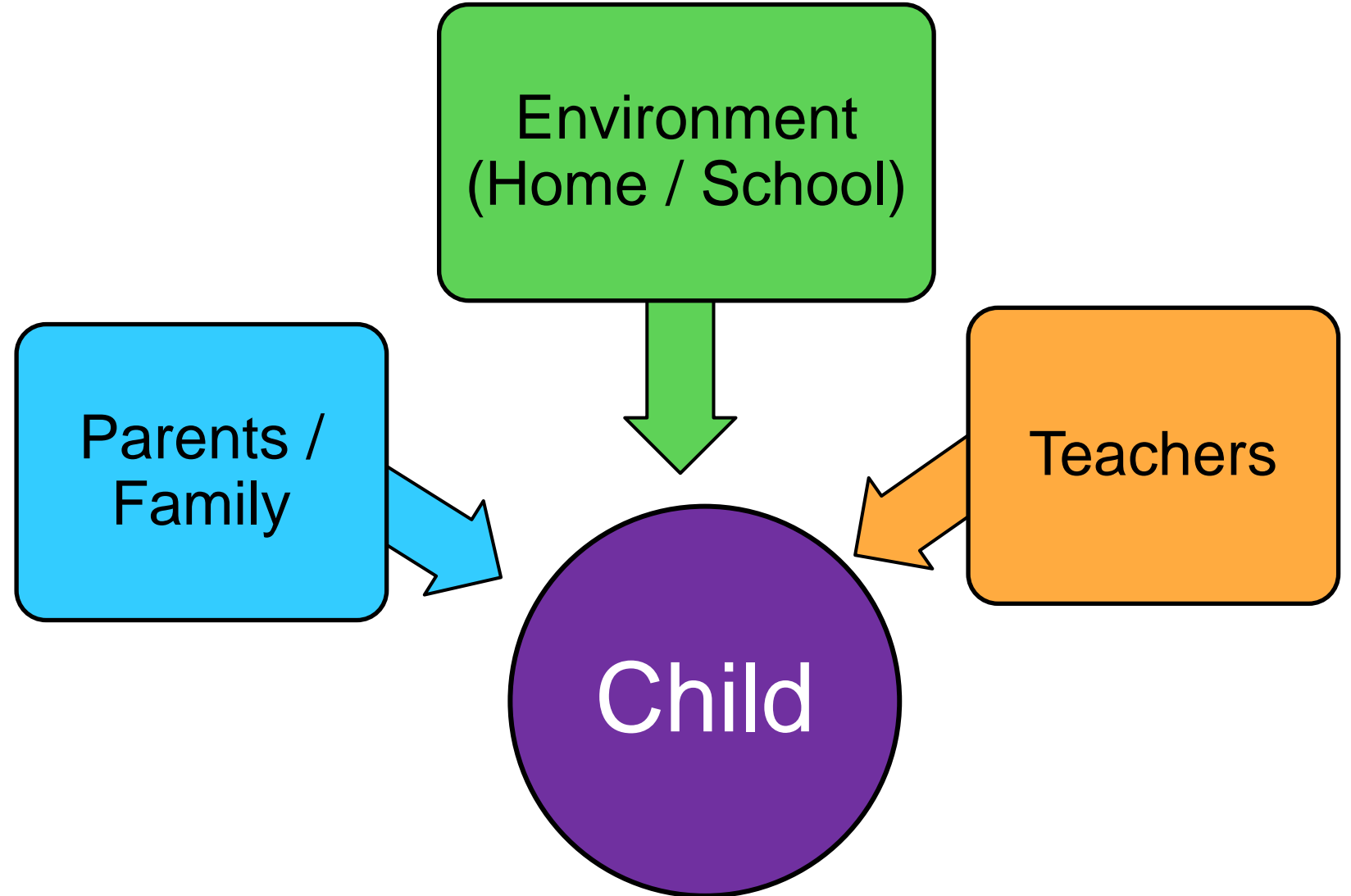


Providing Relevant and Timely Information

- Parent-Teacher-Student conference in May
(by appointment)
- Regular check-ins by Form Teachers



Who matters in this equation?

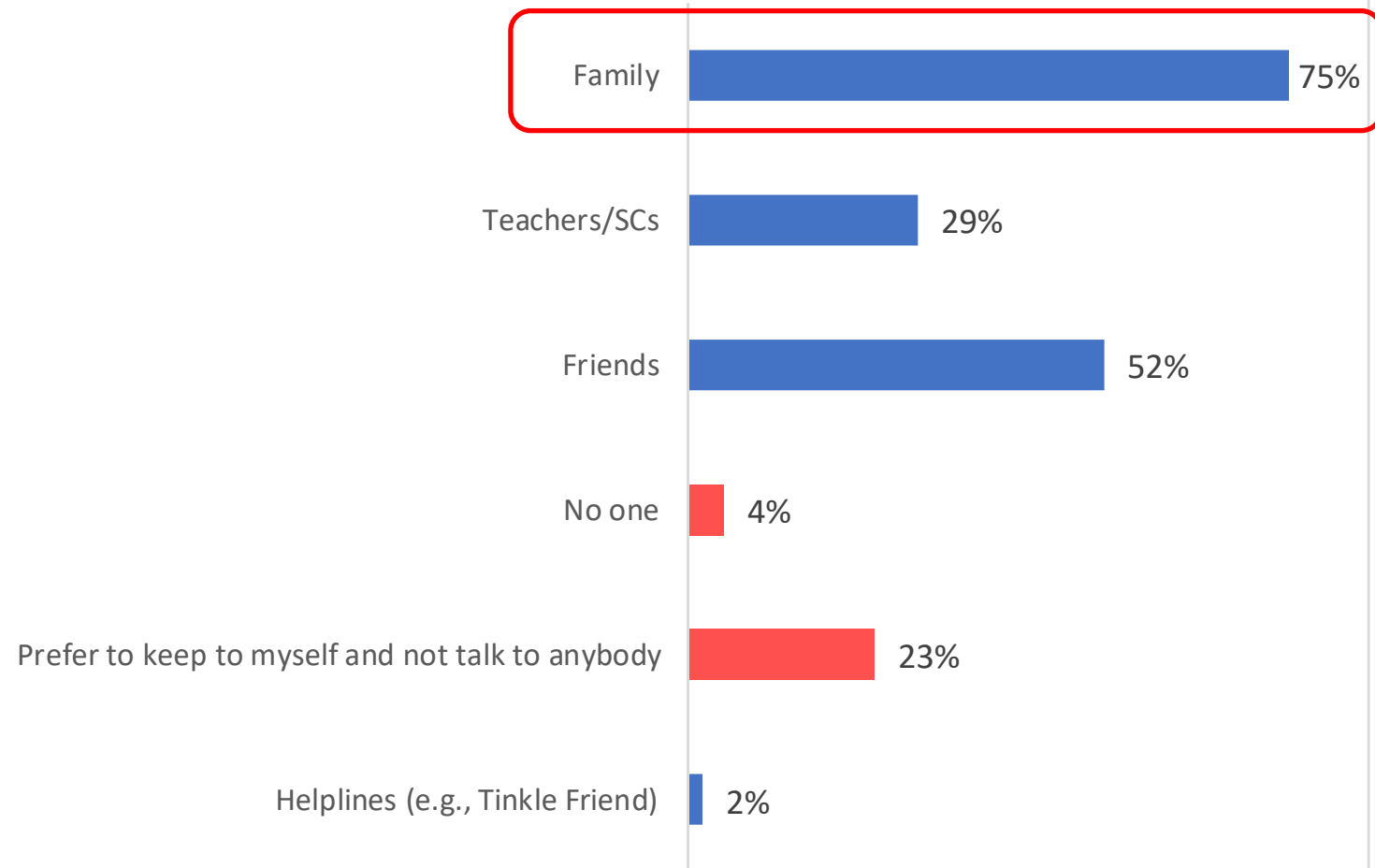


Term 1 Check-in Survey (2024)



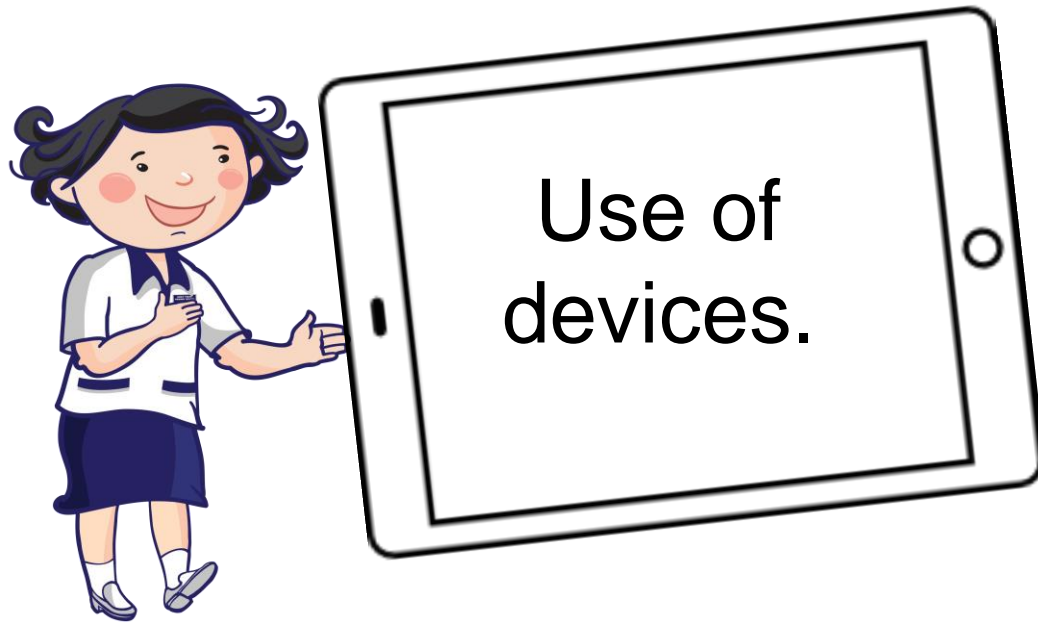
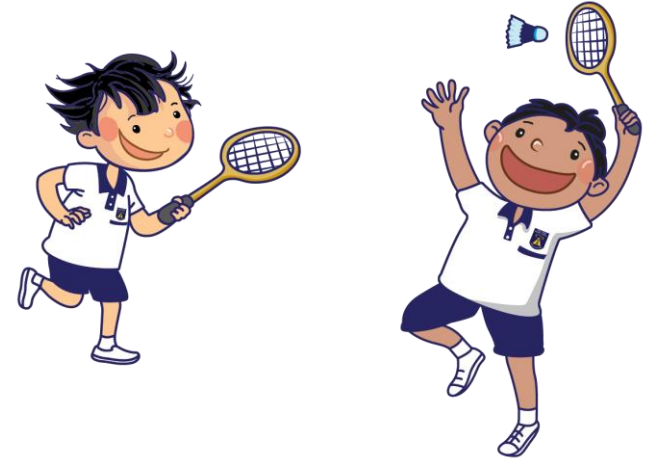
Question 12

Sources of support



Mental Wellbeing of the student

- Balance between studying and leisure.
- Balance between structure and autonomy.
- Balance between encouragement and consequences.





We will now move on to the subject briefings for more information on your child's Primary 5 journey.

Meet-the-Parents Session

Thank You



A PRESENTATION BY
BUKIT TIMAH PRIMARY SCHOOL

A SCHOOL THAT FUELS THE HEART AND MINDS TO BE FUTURE-READY